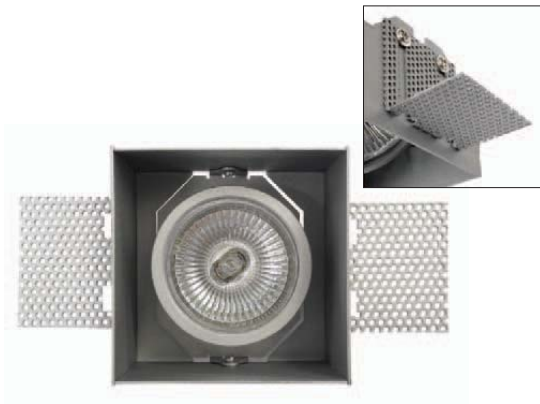
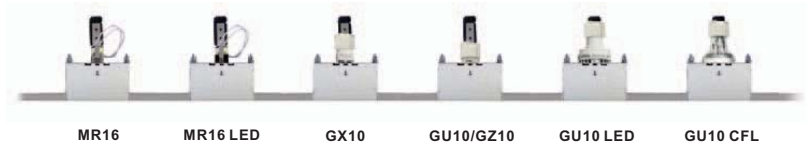
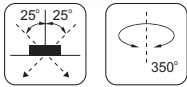
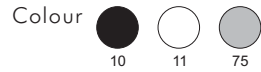


Domino Trimless



Domino Trimless

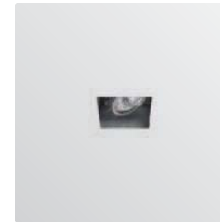
Recessed lamp spotlight system.

Features

- 0°-25° and 350° directional tilting angle adjustability.
- Housing made of die formed galvanized steel.
- Installation brackets suitable for ceiling thickness up to max. 25mm.
- Transformer or control gear in pre-wired remote unit has to be ordered separately.
- Designed and manufactured to comply with European standard EN 60598.

Applications

- A continuous line application either on low voltage or main voltage lighting system with benefit of compact design, available in a variety of sizes and configurations.
- Application areas: retail, residential, galleries, schools, libraries, hotel.



Domino Trimless 1

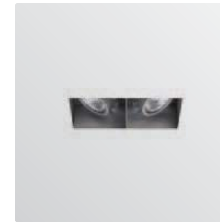
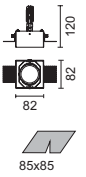
RA58 35W 12V GU5.3 MR16
 10W 12V GU5.3 MR16 LED
 Transformer not included. To be ordered separately.

IP20

RA59 20/35W GX10 MR16 M.H.
 Control gear not included. To be ordered separately.

RA60 35W GU10/ GZ10
 10W GU10/GZ10 LED
 11W GU10/GZ10 CFL

IP20



Domino Trimless 2

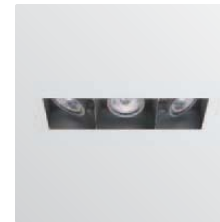
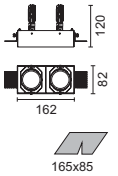
RA61 2x35W 12V GU5.3 MR16
 2x10W 12V GU5.3 MR16 LED
 Transformer not included. To be ordered separately.

IP20

RA62 2x20/35W GX10 MR16 M.H.
 Control gear not included. To be ordered separately.

RA63 2x35W GU10/ GZ10
 2x10W GU10/GZ10 LED
 2x11W GU10/GZ10 CFL

IP20



Domino Trimless 3

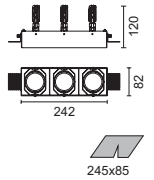
RA64 3x35W 12V GU5.3 MR16
 3x10W 12V GU5.3 MR16 LED
 Transformer not included. To be ordered separately.

IP20

RA65 3x20/35W GX10 MR16 M.H.
 Control gear not included. To be ordered separately.

RA66 3x35W GU10/ GZ10
 3x10W GU10/GZ10 LED
 3x11W GU10/GZ10 CFL

IP20



Domino Trimless Accessories Table

Accessories	Coloured Filters	Refractor	UV Filter	Honeycomb Louvre
Light Source				
MR16	2083	2113		2504
MR16 LED				
GX10 MR16	2614	2615		2504
GU10/ GZ10	2614	2615		2504
GU10/GZ10 LED	2614	2615		2504
GU10/GZ10 CFL	2614	2615		2504