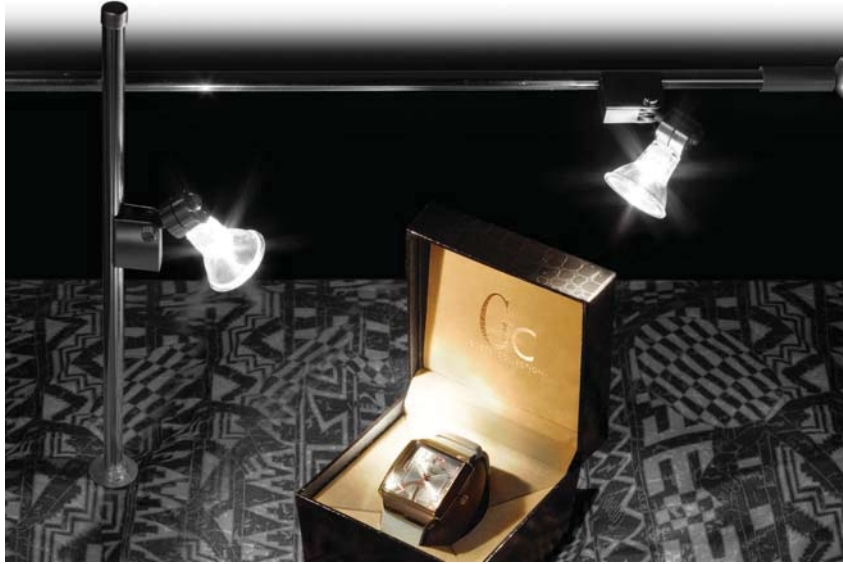
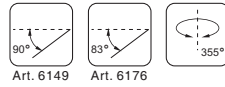
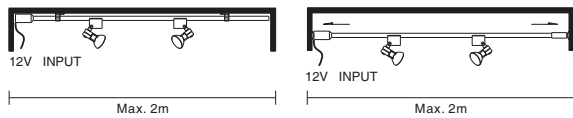


Espresso



Traverse Track



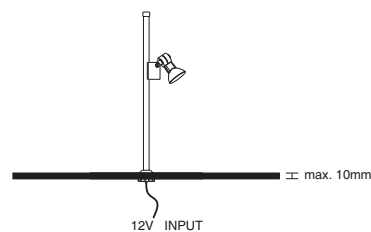
Features IP20

- Compact showcase lighting system with 10mm circular conductor track.
- Comes in standard lengths with the capability to be "cut" on-site, according to site conditions and dimensions to fit actual length requirements.
- Versatile fixing method:
 - Traverse track: the track to be mounted by extended / suction force. From one end to another, or fixed by additional mounting clips
 - Vertical mounted: the track to be mounted vertically on panels (Max. 10mm thick) by means of a plastic locking nut from rear.
- Light sources include Halogen and LED.
- Long life LED light source provides IR and UV free emission.
- Designed and manufactured comply with European standard EN 60598.

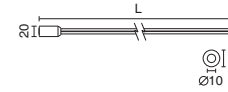
Applications

- Flexible and elegant with choice of different LED lamp colours.
- Application areas: Display cabinets, counters, shelves, small residential applications, jewelry display case, antique and precious objects display case, galleries, museums, highlighting and product authentication.

Vertical Mounted Track



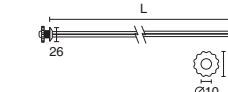
Colour 34



Traverse Micro Track

6145	12V Set	L: 1000
6146	12V Set	L: 2000

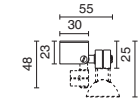
Complete with spring suction end cap and transparent fixing clip, 600mm long supply cable. Transformer not included. To be ordered separately.



Vertical Mounted Micro Track

6147	12V Set	L: 500
6148	12V Set	L: 1000

Complete with transparent locking nut ring, 600mm long supply cable. Transformer not included. To be ordered separately.



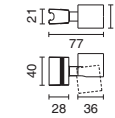
Clip-On Spotlight

6149	For Max. 35W GU4 MR11 Hal.
	or 4W GU4 MR11 LED

12V 50/60Hz operation.
Lamp and Transformer not included. To be ordered separately.



Colour 75

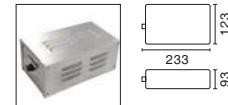


Espresso Track Mounted LED

6176-K30D15	With 3W LED 3000K 150lm	15°
6176-K40D15	With 3W LED 4000K 170lm	15°

Passive dissipation, inclusive of integral 12V DC driver. CRI>80. 12V DC operation. Other beam optics or colour temperatures K or CRI are available upon request.

Accessories



2403	Power Supply
Magnetic Transformer for Halogen bulb, in metallic box.	
Input: 230V 50Hz.	
Output: 12V 50Hz.	
Max. 150W.	
For operation with Art. 6149.	



2713	Power Supply
Electronic Transformer for LED.	
Input: 220-240V 50/60Hz.	
Output: 12V DC.	
Max. 60W.	
For operation with Art. 6176.	