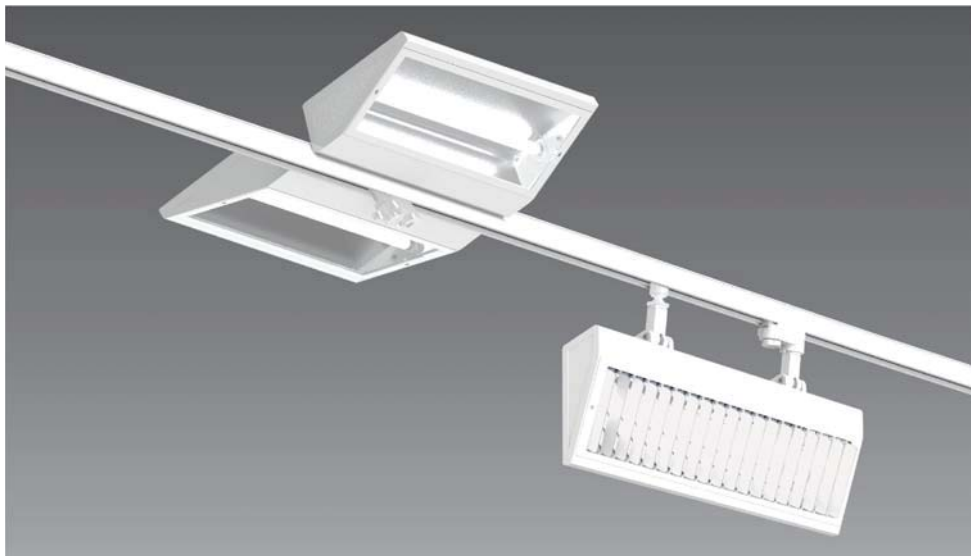


Galleria

Designed by **Franco Mirenzi**



Related products:



GALLERIA System P.312-315
GALLERIA System P.312-315
GALLERIA System P.312-315
GALLERIA System P.312-315
GALLERIA System P.312-315
GALLERIA System P.312-315



For adjustable versions

Features

IP40

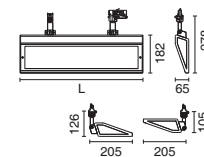
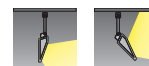
- Track mounted luminaires.
- Housing made by extruded aluminium and die-cast end cap plates mechanically attached with no exposed fixings.
- Diffuser made of transparent polycarbonate, housed inside aluminium extrusion frame for IP40 protection.
- Available in single or double optics, for up-down light or only down or as asymmetric light distribution.
- Louvre consists of die-formed aluminium blades in black or white colour.
- Light sources are T5 fluorescent.
- Roll-formed super-pure aluminium reflector.
- Designed and manufactured to comply with European standard EN 60598.

Applications

- Galleria is an innovative linear lighting system with an elegant shallow design that permits a more interesting visual atmosphere by also allowing selected areas to be easily highlighted the facility of various lighting elements makes it easily adapted to changing needs. It is also available in a version with 3-Circuit Eurotrack profile to allow connection of track spots to achieve an application of ambient and accent lighting.
- Application areas: retail, department stores, art galleries, shopping centers, showrooms, offices, hotels, exhibits, corridors.



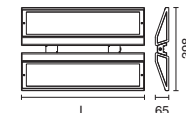
Colour 11 75



Galleria Track Adjustable

| | | | | |
|-------------|----------|-------|-----|---------|
| 6299 | 1x14/24W | G5 T5 | | L: 590 |
| 6300 | 1x21/39W | G5 T5 | | L: 890 |
| 6301 | 1x28/54W | G5 T5 | | L: 1190 |
| 6393 | 1x8.5W | G5 T5 | LED | L: 590 |
| 6394 | 1x17W | G5 T5 | LED | L: 890 |
| 6395 | 1x23W | G5 T5 | LED | L: 1190 |

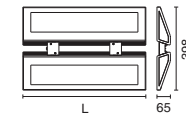
With integral electronic control gear 220-240V 50/60Hz.
 Complete with 3-Circuit Eurotrack adaptor.
 Can be adjusted +/- 90° relative to vertical axis.



Galleria Track Fixed Twin Uplight

| | | | | |
|-------------|----------|-------|-----|---------|
| 7109 | 2x14/24W | G5 T5 | | L: 590 |
| 7110 | 2x21/39W | G5 T5 | | L: 890 |
| 7111 | 2x28/54W | G5 T5 | | L: 1190 |
| 7133 | 2x8.5W | G5 T5 | LED | L: 590 |
| 7134 | 2x17W | G5 T5 | LED | L: 890 |
| 7135 | 2x23W | G5 T5 | LED | L: 1190 |

With integral electronic control gear 220-240V 50/60Hz.
 Complete with 3-Circuit Eurotrack adaptor.

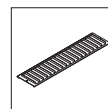


Galleria Track Fixed Twin Up & Down Light

| | | | | |
|-------------|----------|-------|-----|---------|
| 7112 | 2x14/24W | G5 T5 | | L: 590 |
| 7113 | 2x21/39W | G5 T5 | | L: 890 |
| 7114 | 2x28/54W | G5 T5 | | L: 1190 |
| 7136 | 2x8.5W | G5 T5 | LED | L: 590 |
| 7137 | 2x17W | G5 T5 | LED | L: 890 |
| 7138 | 2x23W | G5 T5 | LED | L: 1190 |

With integral electronic control gear 220-240V 50/60Hz.
 Complete with 3-Circuit Eurotrack adaptor.

Accessories



| | |
|-------------|----------------------------|
| 2645 | Anti-glare grid for 14/24W |
| 2646 | Anti-glare grid for 21/39W |
| 2647 | Anti-glare grid for 28/54W |

In aluminium.
 Available in colours 10, 11.