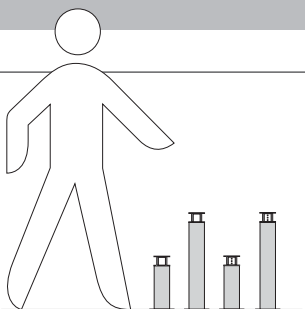
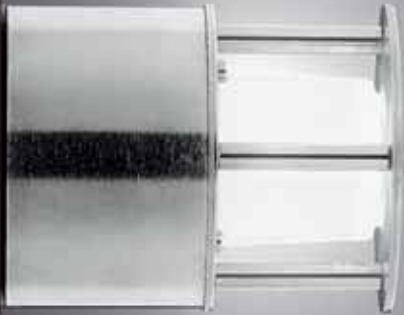


LED

JOKER

design Roberto Fiorato



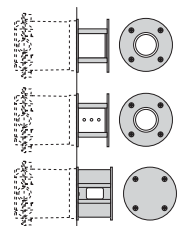
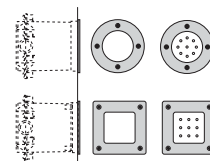
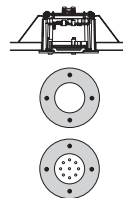
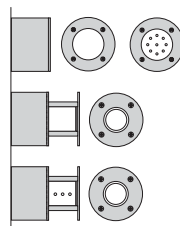
H max 0,5 m.
H min 0,25 m.

A family of products suitable for outdoor installation for surface, recessed, and post top mounting.

The compact size of the Joker Wall is ideal for installations where it is not possible to recess the fittings, in both public and residential applications. The range includes wall mounted versions multi-directional light rays and coloured LED's.

Joker fittings are also suitable for halogen lamp sources.

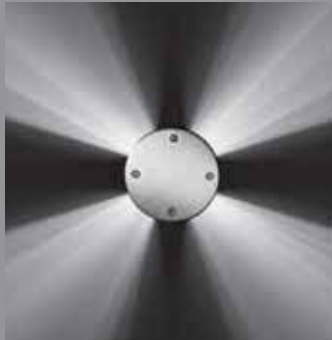
The flexibility of the range provides the designer and installer with a variety of options to meet the demands of the project from pathway lighting to accent and feature lighting in public areas.





JOKER WALL F
JOKER TONDO F
JOKER IN F

A clear toughened Fresnel lens directs the light output. Ideal for selective lighting, to attract attention, for pathways and stairways illumination.



JOKER RAY

The screen combined with the lenticular clear glass divides the light into four 90° angled beams. Ideal to create effects on walls, or to underline architectural details.

Joker Wall is available in white and blue LEDs. The Vision versions, both post mounted and wall mounted, characterised by a cylindrical diffuser, use blue coloured LED only.







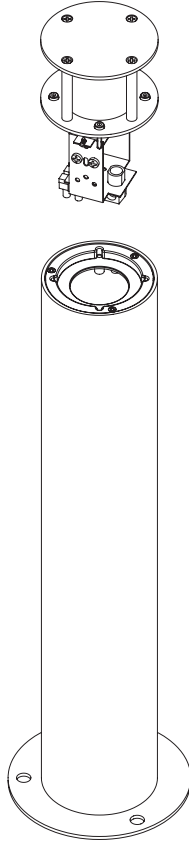
JOKER P

JOKER P

	E14	max 1x40w IBT
	G9	1x40w HSG

JOKER P LED

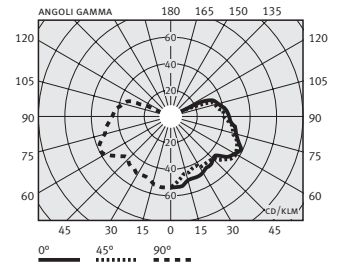
	n. 1 ledx2w
--	-------------



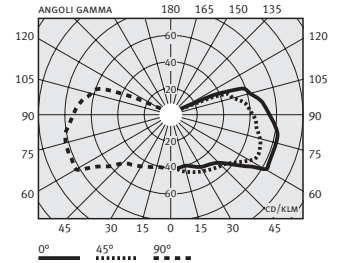
Range of luminaries for post mount applications, comprising:

- Technopolymer base
- Cylindrical shaped diffuser, satin glass.
- Aluminium reflector
- Silicone gasket
- Stainless steel covers and locking screws
- "LED" versions include 220/240V 50/60Hz safety transformer
- 85 mm diameter stainless steel post, 250 mm and 500 mm height, complete with welded flange
- Fitting is complete when installed onto post.

Joker P - 1x40w IBP



Joker P - 1x40w HSG



lampholder	w	ILCOS	colour	class	IP	Kelvin	$\cos \phi$	EEL	code	notes
------------	---	-------	--------	-------	----	--------	-------------	-----	------	-------

JOKER P

E14	max 1x40w	IBT	SS1	I	44	• •			IK06 1J xx3	006924
-----	-----------	-----	-----	---	----	-----	--	--	-------------	--------

Halogen

G9	1x40w	HSG	SS1	I	44	• •	2900		IK06 1J xx3	006922
----	-------	-----	-----	---	----	-----	------	--	-------------	--------

JOKER P LED

LED - voltage 220/240V 50/60Hz

n. 1 ledx2w			SS1+BLL	I	44	• •			IK06 1J xx3	006926
-------------	--	--	---------	---	----	-----	--	--	-------------	--------

If information about Kelvin degrees is provided, this means that the light bulb is included.

description	colour	code
Stainless steel pole 500	SS1	000935
Stainless steel pole 250	SS1	000934

SS1 SS1+BLL

COMPLETE UNIT

1A+1B = please order 2 codes

COMPONENTS

- A** luminaire
- B** post

