

# Miniluce



## Related products:



**FLAP**  
P.322-323

**MINILUCE LED**  
P.272-273



Ceiling base for power supply

Ceiling base for suspension wire

## Features IP20/IP44

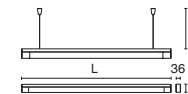
- Surface mounted or Pendant luminaire.
- Structure made of extruded aluminium with die cast aluminium end caps. The diffuser cover is made in satin acrylic.
- Electronic T5 control gear is integrated and dimmable option is available upon request.
- Fixture is available in Pendant version or IP44 Wall/Ceiling version.
- The pendant version fixtures are supplied with ceiling cups and with pre-installed 1.5 meter electrical cable and with 1.5 meter steel wires.
- Easy relamping via removable front acrylic diffuser by snap-in catch action.
- Light source is T5 Fluorescent.
- Designed and manufactured to comply with European standard EN 60598.

## Applications

- Miniluce has a simple and stylish design. The 3 directional emitting satin acrylic cover with IP44 protection (only for the wall/ceiling version) enables the architect and lighting designers the ability to integrate it into most applications including wet rooms.
- Application areas: retail, department stores, galleries, shopping centers, gyms, showrooms, schools, community buildings, supermarkets residential, restaurants, offices, bathrooms, under canopy areas.



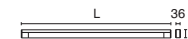
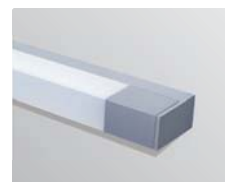
Colour 75



## Miniluce Suspension

Model	Power	Ballast	Length (L)
7027	21W	G5 T5	948
7029	28W	G5 T5	1248
7030	35W	G5 T5	1548
7104	39W	G5 T5	948
7105	54W	G5 T5	1248

With integral electronic control gear 220-240V 50/60Hz.  
With ceiling base for power supply and mechanical suspensions.  
IP20



## Miniluce Wall/Ceiling

Model	Power	Ballast	Length (L)
1077	21W	G5 T5	948
1078	28W	G5 T5	1248
1079	35W	G5 T5	1548
1162	39W	G5 T5	948
1163	54W	G5 T5	1248

With integral electronic control gear 220-240V 50/60Hz.  
IP44