

PAVES UP

design R. Fiorato - F. Pagliarini

- Inground luminaire, comprising:
- Body and diffuser manufactured from technopolymer
 - Stainless steel trim
 - Foam polymer gasket
 - Stainless steel locking screws
 - Recessed fixing kit manufactured from technopolymer. Order separately
 - H07RN-F special cable
 - Drainage required
 - Simplified installation due to the storage of excess length of cable within the luminaire

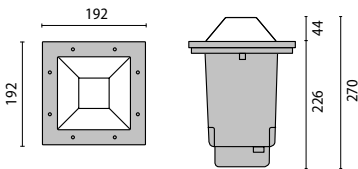
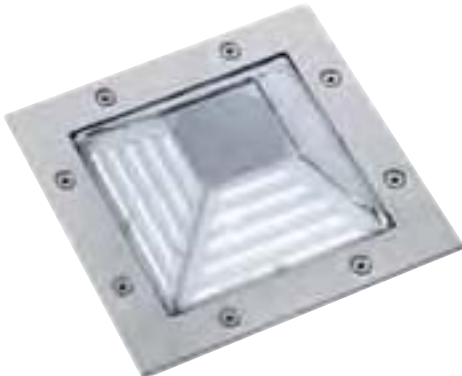
- Bodeneinbauleuchte, bestehend aus:
- Gehäuse und Diffusor aus Technopolymer
 - Ring aus Edelstahl
 - Dichtung aus Polymerschaumstoff
 - Äußere Schrauben aus Edelstahl
 - Einbaugehäuse aus Technopolymer, nicht im Lieferumfang enthalten
 - Drainage notwendig
 - Spezial-Netzkabel H05RN-F
 - Vereinfachte Installation durch Aufrollen des langen Kabels im Gerät.



IP 67

class II

IK10 20J xx9



LAMPHOLDER FASSUNG W	COLOUR CLASS ILCOS FARBE KLASSE	COS φ KELVIN ≥ 0,9	CODE EEI	NOTES BESTELLNR. BEMERKNG. EURO
-------------------------	------------------------------------	-----------------------	-------------	------------------------------------

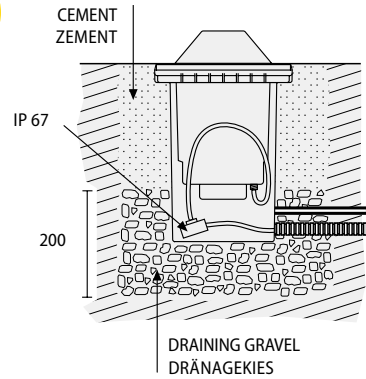
PAVES UP

E27	max 1x18w FBT SS1 II			700012
-----	----------------------	--	--	---------------

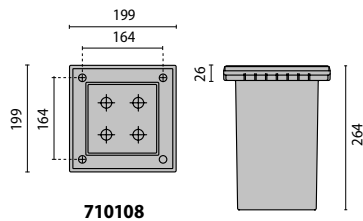
IK10 20J xx9



IK10 20J

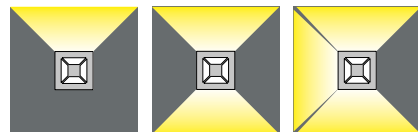
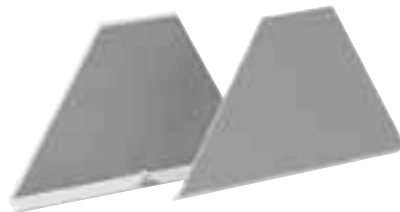


ACCESSORIES / ZUBEHÖR

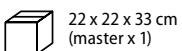


710108

DESCRIPTION / BESCHREIBUNG	COLOUR FARBE	CODE BESTELLNR.	EURO
Recessed fixing kit Paves/Einbautopf Paves		710108	
Partial screen/Teilabschirmung		700014	



PACKAGE SIZE / VERPACKUNGSMASSE



22 x 22 x 33 cm (master x 1)

