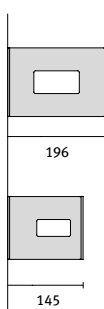


# TRACTO

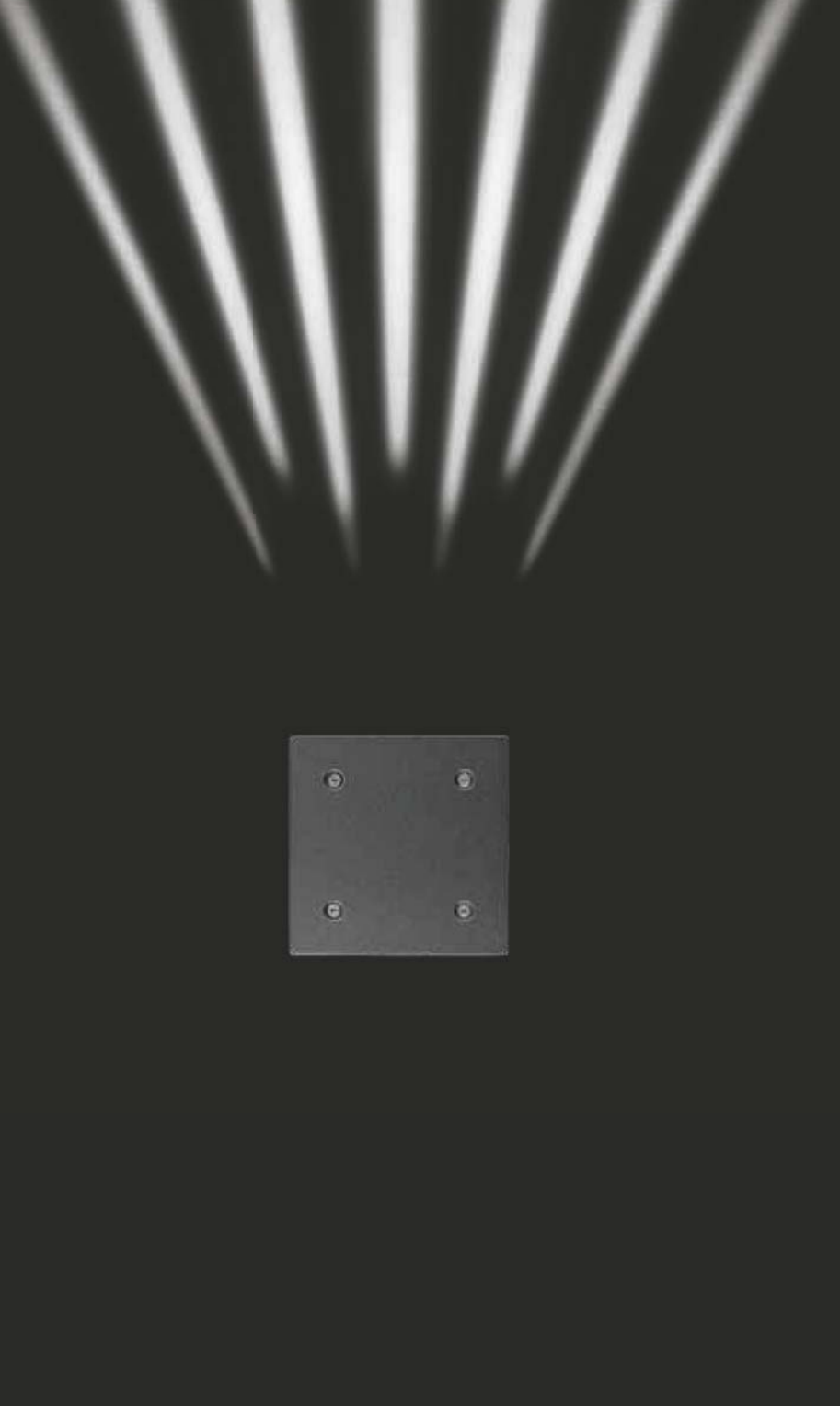
design R. Fiorato - F. Pagliarini



The fittings are designed to have a minimal protrusion from the wall, only 145mm for the MINITRACTO and MINITRACTO LINE versions.



The concentrating lens produces a perfectly defined narrow beam which enables decorative effects to be produced.



Tracto is a range of indoor and outdoor wall-mounted accent lighting suitable for use with metal halide light sources; 35W max for TRACTO and 20W max for MINITRACTO.

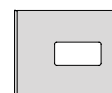
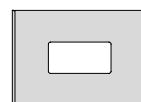
Manufactured from extruded aluminium with a painted finish, the bodies are provided with options for illuminated openings from single sided to all four sides.

Available in the following beam options: narrow beam (NB) produced by a concentrating lens, or wide beam (WB) produced using a flat glass lens.

Decorative line effects are possible with the MINITRACTO LINE models by longitudinal lines cut into the extrusion.

All fittings are Class I complete with electronic control gear. TRACTO and MINITRACTO are suitable for providing accent and effect lighting in both residential and public areas.

MINITRACTO LINE provides a decorative lighting effect.





# TRACTO

G8,5 1x35 W MT

Indoor and outdoor wall-mounted accent lighting comprises:

- extruded aluminium body painted in grey or anthracite
- die-cast aluminium wall-mounting base
- die-cast aluminium front cover painted in painted grey or anthracite
- EPDM gasket
- TRACTO NB versions are complete with a concentrating optical lens for a 15 ° light beam
- TRACTO WB versions are complete with a flat glass cover providing a diffused light distribution
- TRACTO NB and WB versions are available with a concentrating lens on one side and a flat glass diffuser on the other.
- stainless steel locking screws
- the fitting is not suitable for through-wiring
- the range offers different combinations of lenses and diffusers to combine the lighting effects as desired



lampholder	W	ILCOS	colour	class	IP	Kelvin	↑	Cos φ ≥ 0,9	EEL	code	notes
------------	---	-------	--------	-------	----	--------	---	-------------	-----	------	-------

<b>TRACTO 1 NB</b>											
Discharge - electronic ballast 220/240 V 50/60 Hz											
G8,5	1x35 W	MT	GR2	I	65	•			IK08 5J xx5	•	A2÷A3 3009185
G8,5	1x35 W	MT	AN3	I	65	•			IK08 5J xx5	•	A2÷A3 3009195

<b>TRACTO 2 NB</b>											
Discharge - electronic ballast 220/240 V 50/60 Hz											
G8,5	1x35 W	MT	GR2	I	65	•			IK08 5J xx5	•	A2÷A3 3009205
G8,5	1x35 W	MT	AN3	I	65	•			IK08 5J xx5	•	A2÷A3 3009215

<b>TRACTO 4 NB</b>											
Discharge - electronic ballast 220/240 V 50/60 Hz											
G8,5	1x35 W	MT	GR2	I	65	•			IK08 5J xx5	•	A2÷A3 3009225
G8,5	1x35 W	MT	AN3	I	65	•			IK08 5J xx5	•	A2÷A3 3009235

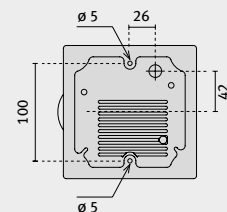
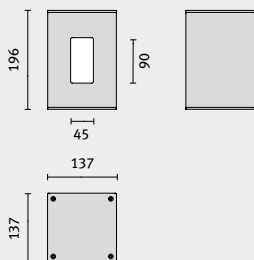
<b>TRACTO 1 WB</b>											
Discharge - electronic ballast 220/240 V 50/60 Hz											
G8,5	1x35 W	MT	GR2	I	65	•			IK08 5J xx5	•	A2÷A3 3024555
G8,5	1x35 W	MT	AN3	I	65	•			IK08 5J xx5	•	A2÷A3 3024565

<b>TRACTO 2 WB</b>											
Discharge - electronic ballast 220/240 V 50/60 Hz											
G8,5	1x35 W	MT	GR2	I	65	•			IK08 5J xx5	•	A2÷A3 3024575
G8,5	1x35 W	MT	AN3	I	65	•			IK08 5J xx5	•	A2÷A3 3024585

<b>TRACTO 4 WB</b>											
Discharge - electronic ballast 220/240 V 50/60 Hz											
G8,5	1x35 W	MT	GR2	I	65	•			IK08 5J xx5	•	A2÷A3 3024595
G8,5	1x35 W	MT	AN3	I	65	•			IK08 5J xx5	•	A2÷A3 3024605

<b>TRACTO 1 NB + 1 WB</b>											
Discharge - electronic ballast 220/240 V 50/60 Hz											
G8,5	1x35 W	MT	GR2	I	65	•			IK08 5J xx5	•	A2÷A3 3024615
G8,5	1x35 W	MT	AN3	I	65	•			IK08 5J xx5	•	A2÷A3 3024625

GR2 AN3



# MINITRACTO

GU6,5 1x20 W MT

Indoor and outdoor wall-mounted accent lighting comprises:

- extruded aluminium body painted in grey or anthracite
- die-cast aluminium wall-mounting base
- die-cast aluminium front cover painted in painted grey or anthracite
- EPDM gasket
- MINITRACTO NB versions are available with a concentrating lens providing a 15° light beam
- MINITRACTO WB versions are complete with a flat glass cover providing a diffused light distribution
- MINITRACTO NB and WB versions are available with a concentrating lens on one side and a flat glass diffuser on the other
- stainless steel locking screws
- the fitting is not suitable for through-wiring
- the range offers different combinations of lenses and diffusers to combine the lighting effects as desired



lampholder	W	ILCOS	colour	class	IP	Kelvin	Cos φ ≥ 0,9	EEL	code	notes
------------	---	-------	--------	-------	----	--------	-------------	-----	------	-------

### MINI TRACTO 1 NB

Discharge - electronic ballast 220/240 V 50/60 Hz

GU6,5	1x20 W	MT	GR2	I	65	•	IK10 20J xx9	•	A2÷A3	3009125
GU6,5	1x20 W	MT	AN3	I	65	•	IK10 20J xx9	•	A2÷A3	3009135

### MINI TRACTO 2 NB

Discharge - electronic ballast 220/240 V 50/60 Hz

GU6,5	1x20 W	MT	GR2	I	65	•	IK10 20J xx9	•	A2÷A3	3009145
GU6,5	1x20 W	MT	AN3	I	65	•	IK10 20J xx9	•	A2÷A3	3009155

### MINI TRACTO 4 NB

Discharge - electronic ballast 220/240 V 50/60 Hz

GU6,5	1x20 W	MT	GR2	I	65	•	IK10 20J xx9	•	A2÷A3	3009165
GU6,5	1x20 W	MT	AN3	I	65	•	IK10 20J xx9	•	A2÷A3	3009175

### MINI TRACTO 1 WB

Discharge - electronic ballast 220/240 V 50/60 Hz

GU6,5	1x20 W	MT	GR2	I	65	•	IK10 20J xx9	•	A2÷A3	3024875
GU6,5	1x20 W	MT	AN3	I	65	•	IK10 20J xx9	•	A2÷A3	3024885

### MINI TRACTO 2 WB

Discharge - electronic ballast 220/240 V 50/60 Hz

GU6,5	1x20 W	MT	GR2	I	65	•	IK10 20J xx9	•	A2÷A3	3024895
GU6,5	1x20 W	MT	AN3	I	65	•	IK10 20J xx9	•	A2÷A3	3024905

### MINI TRACTO 4 WB

Discharge - electronic ballast 220/240 V 50/60 Hz

GU6,5	1x20 W	MT	GR2	I	65	•	IK10 20J xx9	•	A2÷A3	3024915
GU6,5	1x20 W	MT	AN3	I	65	•	IK10 20J xx9	•	A2÷A3	3024925

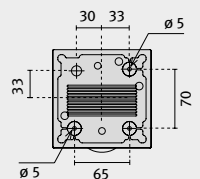
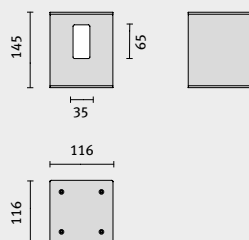
### MINI TRACTO 1 NB + 1 WB

Discharge - electronic ballast 220/240 V 50/60 Hz

GU6,5	1x20 W	MT	GR2	I	65	•	IK10 20J xx9	•	A2÷A3	3024935
GU6,5	1x20 W	MT	AN3	I	65	•	IK10 20J xx9	•	A2÷A3	3024945

GR2

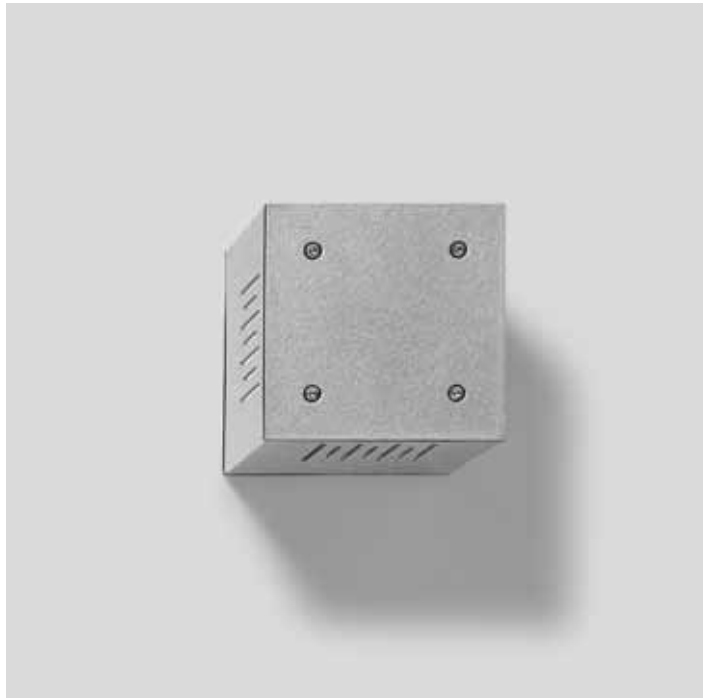
AN3



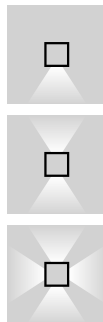
# MINITRACTO LINE

GU6,5 1x20 W MT

- Indoor and outdoor wall-mounted accent lighting comprises:
- extruded aluminium body painted in grey or anthracite
  - die-cast aluminium wall-mounting base
  - die-cast aluminium front cover painted in painted grey or anthracite
  - EPDM gasket
  - versions with 1, 2 and 4 windows worked with a motif of longitudinal lines for a decorative effect
  - integral clear flat glass diffuser
  - stainless steel locking screws
  - the fitting is not suitable for through-wiring



lampholder	W	ILCOS	colour	class	IP	Kelvin	Cos φ ≥ 0,9	EEL	code	notes
------------	---	-------	--------	-------	----	--------	-------------	-----	------	-------



### MINI TRACTO LINE 1

Discharge - electronic ballast 220/240 V 50/60 Hz

GU6,5	1x20 W	MT	GR2	I	65	•	IK08 5J xx5	•	A2÷A3	3025425
GU6,5	1x20 W	MT	AN3	I	65	•	IK08 5J xx5	•	A2÷A3	3025435

### MINI TRACTO LINE 2

Discharge - electronic ballast 220/240 V 50/60 Hz

GU6,5	1x20 W	MT	GR2	I	65	•	IK08 5J xx5	•	A2÷A3	3025445
GU6,5	1x20 W	MT	AN3	I	65	•	IK08 5J xx5	•	A2÷A3	3025455

### MINI TRACTO LINE 4

Discharge - electronic ballast 220/240 V 50/60 Hz

GU6,5	1x20 W	MT	GR2	I	65	•	IK08 5J xx5	•	A2÷A3	3025465
GU6,5	1x20 W	MT	AN3	I	65	•	IK08 5J xx5	•	A2÷A3	3025475

